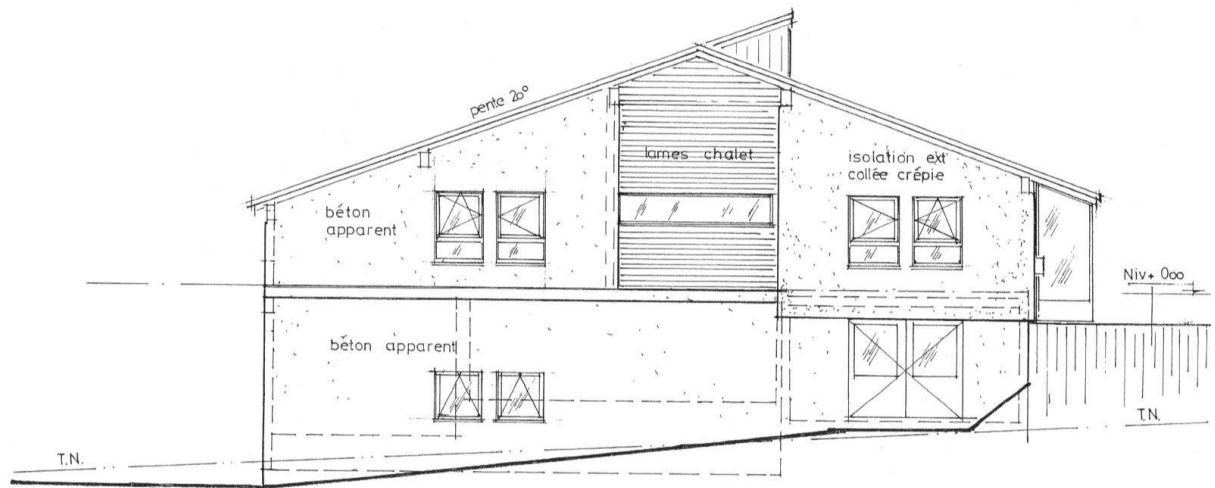


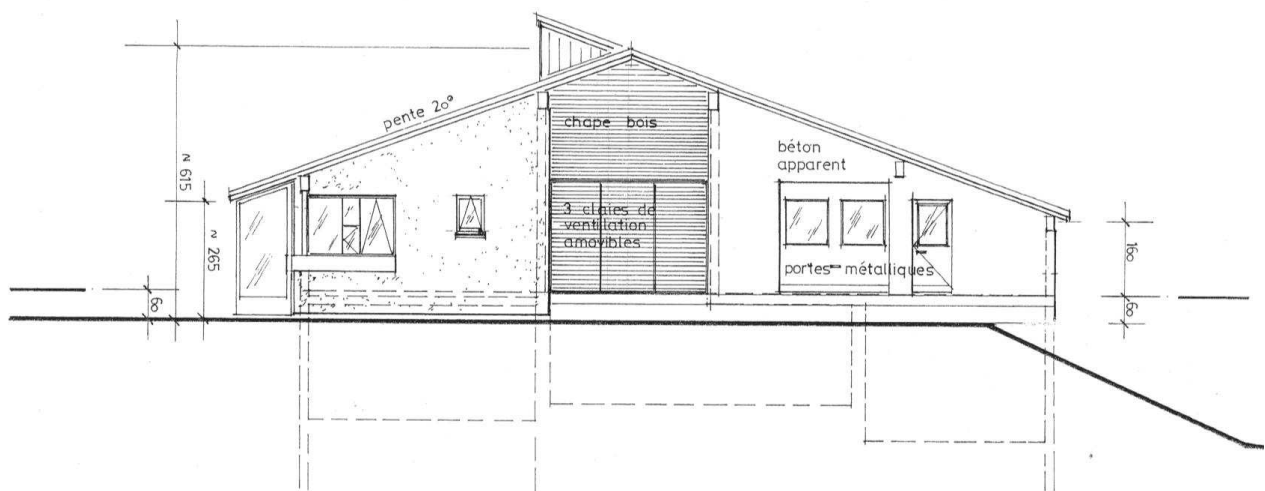
# Remontées Mécaniques du *Balcon du Jura Vaudois* *Sainte-Croix / Les Rasses*

Bâtiment technique « B2 » 2007



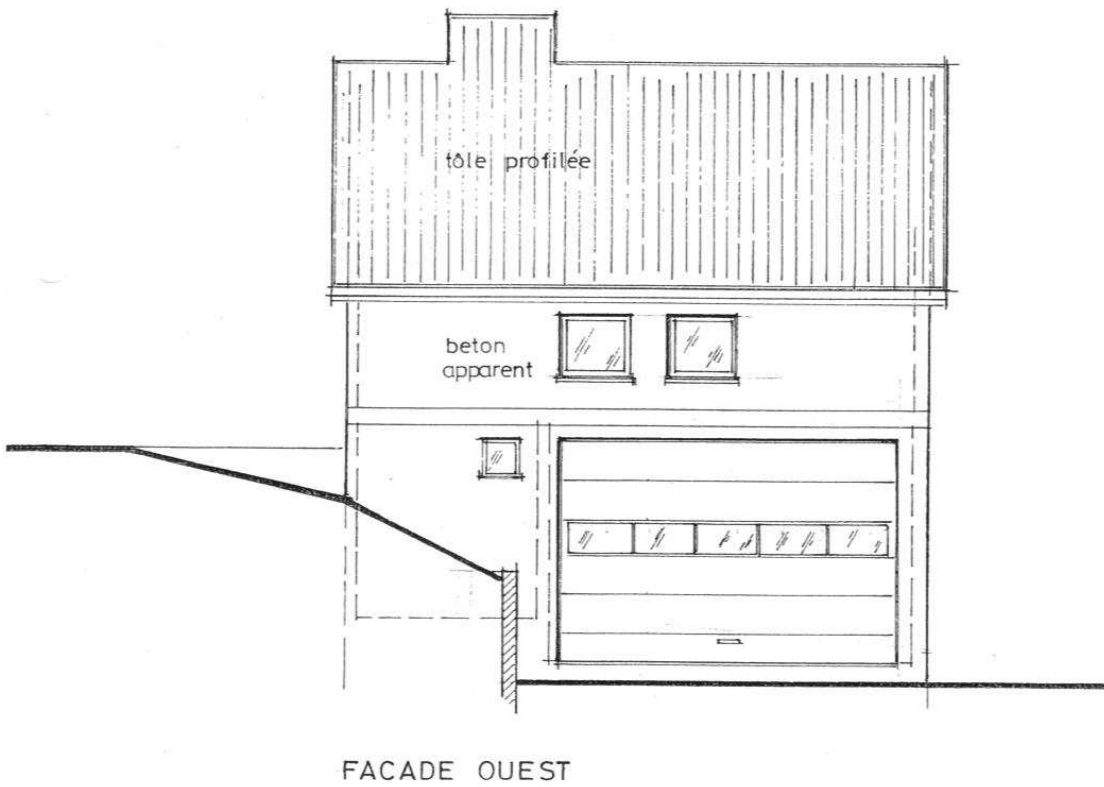
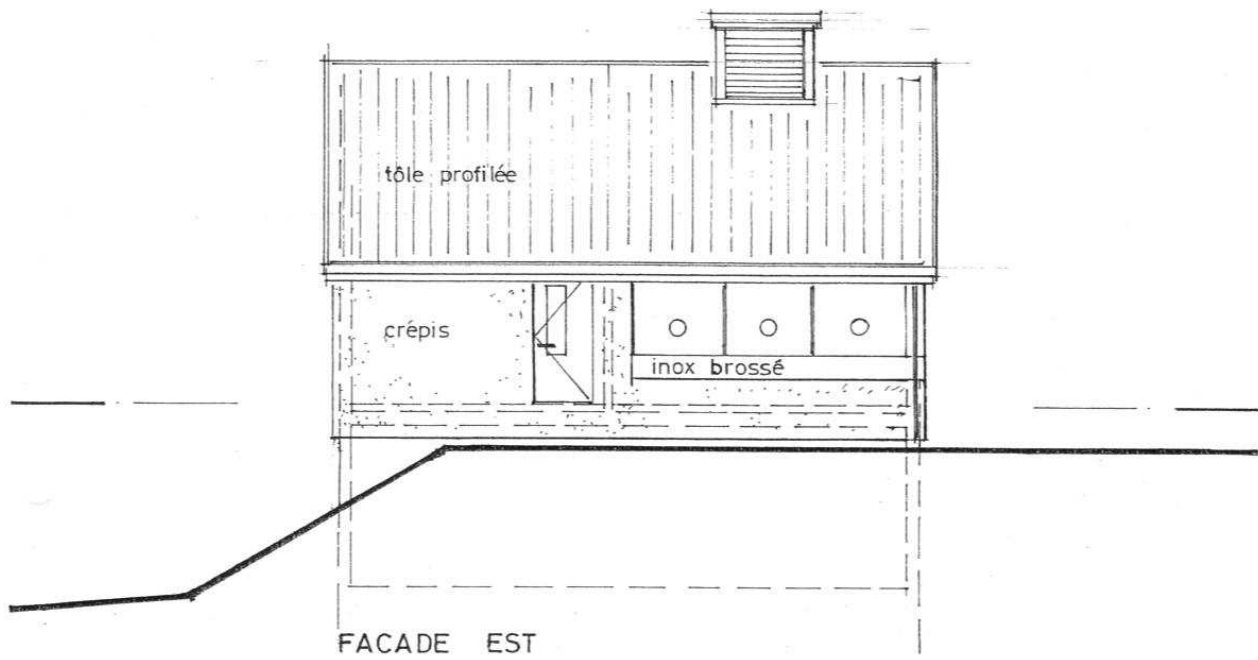
studio ARCHILUX 1452 les rasses mars 2006

FACADE SUD

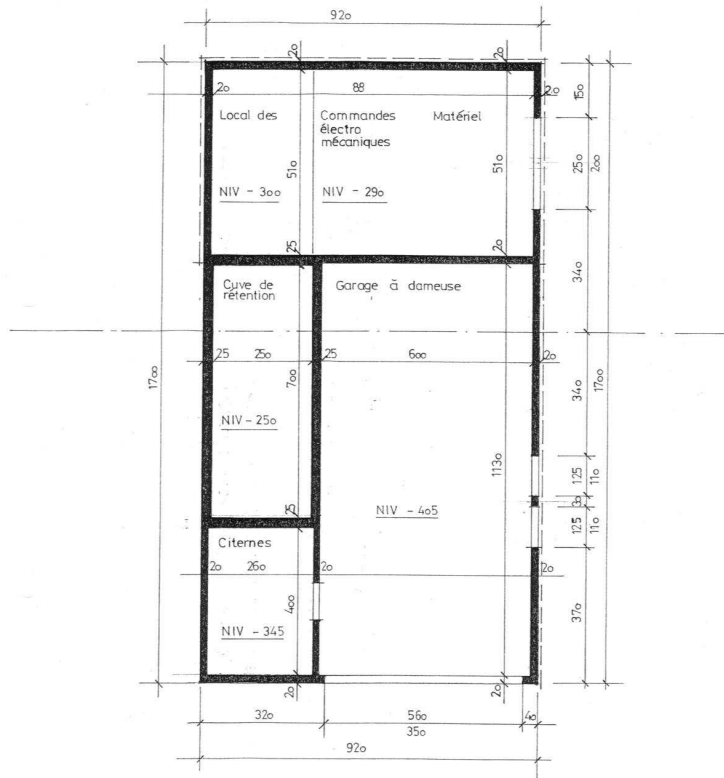


studio ARCHILUX 1452 les rasses mars 2006

FACADE NORD

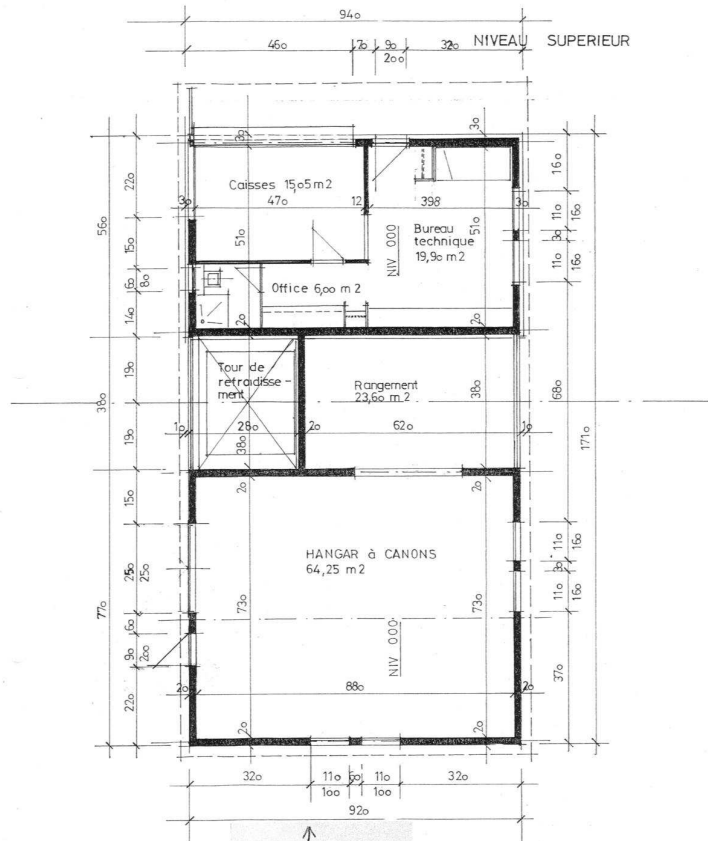


NIVEAU INFÉRIEUR



studio ARCHILUX 1452 les rasses mars 2006

NIVEAU SUPÉRIEUR



Utilisation :  
- Et. Rangement  
- Riva. salle de  
pique nique.

studio ARCHILUX 1452 les rasses mars 2006